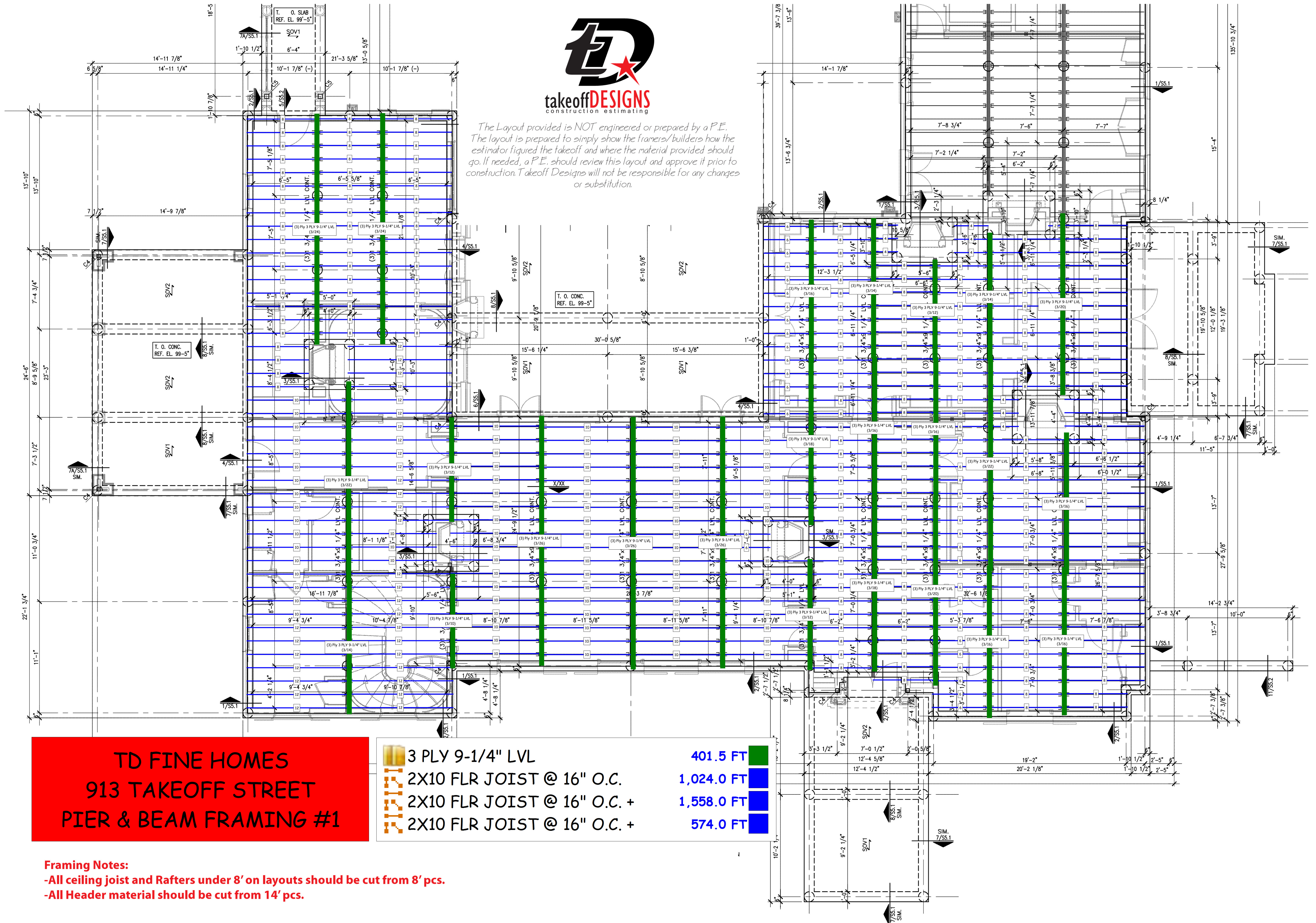


The Layout provided is NOT engineered or prepared by a P.E.  
The layout is prepared to simply show the framers/builders how the  
estimator figured the takeoff and where the material provided should  
go. If needed, a P.E. should review this layout and approve it prior to  
construction. Takeoff Designs will not be responsible for any changes  
or substitution.



**TD FINE HOMES**  
**913 TAKEOFF STREET**  
**PIER & BEAM FRAMING #1**

	3 PLY 9-1/4" LVL	401.5 FT
	2X10 FLR JOIST @ 16" O.C.	1,024.0 FT
	2X10 FLR JOIST @ 16" O.C. +	1,558.0 FT
	2X10 FLR JOIST @ 16" O.C. +	574.0 FT

**Framing Notes:**  
-All ceiling joist and Rafters under 8' on layouts should be cut from 8' pcs.  
-All Header material should be cut from 14' pcs.